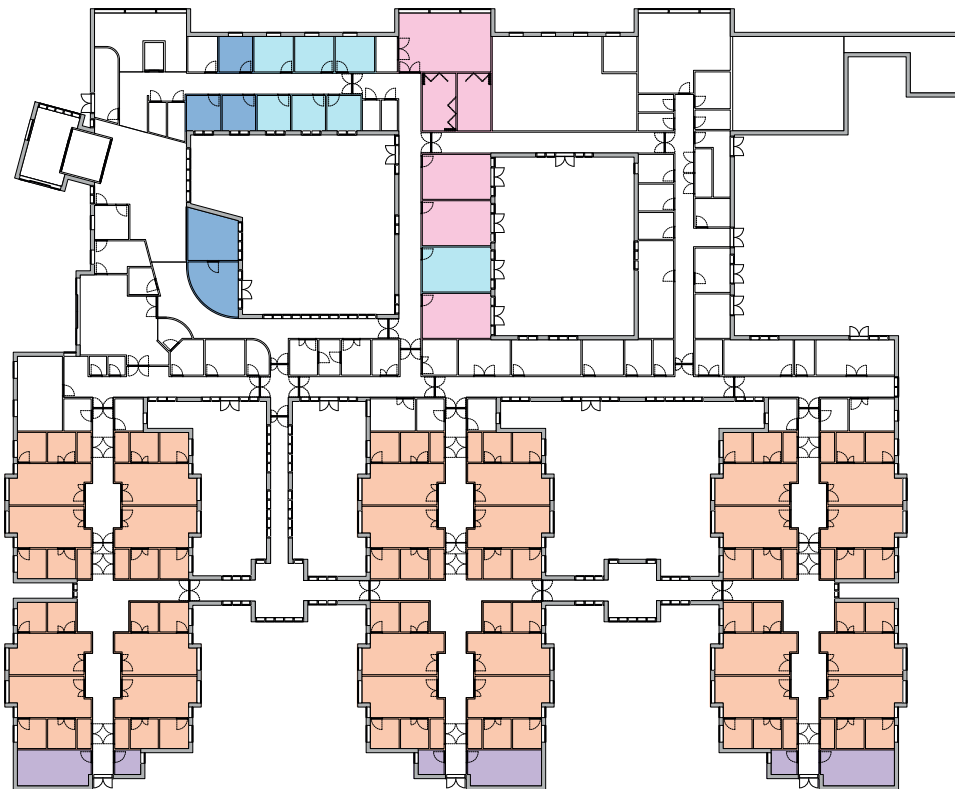




PROPOSED HOSPICE PLAN

GROUND FLOOR



INPATIENT UNIT

Our current site has 18 beds in a mix of four-bed and two-bed bays and single rooms. Only one of the single rooms has space for family to stay in comfort over night. Our new hospice will have 24 single, en-suite rooms, all with space for family to visit and stay overnight, and every room will also have access to secluded garden spaces, preserving the links with nature which so many of our patients tell us they cherish.

THERAPY AND CONSULTATION ROOMS

More rooms will allow us to offer more outpatient appointments with our consultants, and more targeted sessions with therapists, to help people make the most of the time they have left. Our consultants will discuss the management of pain and other symptoms, whilst therapists will help people with daily living skills, working to minimise breathlessness and improve coordination and motor skills. A new gym will be almost twice the size of our current gym, allowing us to offer more varied exercise for more people.

EMOTIONAL AND SPIRITUAL SUPPORT

Limited space means that we cannot expand our Patient and Family Support Team, who offer emotional, spiritual and welfare support both at Malthouse Road, in people's homes and other places such as care homes. Counselling services offered on-site currently have to share space with outpatient appointments, severely limiting the number of sessions we can offer. The new site will offer dedicated counselling spaces, designed with an understanding of the needs of people approaching the end of their lives, and bereaved family members.

There will also be more room for our staff and volunteer counsellors, allowing us to grow these teams and reach more people with this vital support.

There will also be a dedicated spiritual space, for those of all faiths or none, where people can go for quiet reflection and contemplation.

FAMILY LOUNGES

Some patients and families like to share their experiences and every wing will have a family lounge where people can come together to talk, eat or just sit together, along with a separate shower room.

DAY HOSPICE

Providing a vital opportunity for outpatients to share their experiences, to form bonds and to talk to nurses in a friendly, relaxed atmosphere, our current Day Hospice is a single room which limits the activities we can offer at any one time. The new Day Hospice will be larger, allowing us to offer places to more people for longer. It will also have dedicated consultation spaces and separate areas for activities such as arts and crafts, music and other alternative therapies.

COMMUNITY NURSING HUB

(The Community Nursing Hub will be on the first floor so is not shown on this plan). Most people choose to die in the comfort and familiarity of their own home. Our community nurses are at the heart of our service and reach more people than any other team. Limited space on our current site means that we cannot expand this team, placing severe restrictions on the number of people we can support. More space in the new hospice will allow for the expansion of this team, allowing us to reach many more people every year in their homes, in care homes and in hospitals.