

**ST CATHERINE'S
HOSPICE**

SUMMER 2019

Matters

HEART TO HEART

OUR FIRST EVER COMMUNITY
ART TRAIL LAUNCHES! P6 - 7.

**COMMUNITY RAISES
OVER £1 MILLION
TOWARDS NEW HOSPICE**

So that nobody has to face
death and loss alone, p3



MUM HAD HER CREATURE COMFORTS

Emma tells us how your support allowed
her Mum to be cared for at home, p5

CONTENTS

Latest News

- 3 YOU'VE RAISED £1 MILLION
TOWARDS OUR NEW HOSPICE!**

Patient Story

- 4 HARRY'S STORY**

Relative's Story

- 5 EMMA'S STORY**

Latest News

- 6 & 7 HEART TO HEART – OUR
COMMUNITY ART TRAIL**

Relative's Story

- 8 ANNE'S STORY**

Volunteers Story

- 9 SUE AND RITA'S STORIES**

Supporter Story

- 10 JEAN'S STORY**

Supporter Story




- 11 MARIANNE'S STORY**

Ways you can help

- 12 SUPPORT ST CATHERINE'S HOSPICE**

St Catherine's Hospice,
Malthouse Road, Crawley,
West Sussex, RH10 6BH

Telephone: 01293 447333
Email: fundraising@stch.org.uk
www.stch.org.uk

 St Catherine's Hospice Crawley
 @StCHospice
 @stcatherinescrawley



"Welcome to your latest edition of Matters, St Catherine's Hospice supporter magazine that keeps you up to date with hospice news, and shows you how your support makes a difference to local terminally ill people, their family and friends."

As Chief Executive, it's an honour to see the impact of your support and donations on others in your local community. It's only thanks to you that we can be here to provide physical and emotional care during the most difficult of times.

For Harry, (p4) this involved gardening during a stay on our ward. Whilst for Anne and her daughter, Hannah, (p8) it involved counselling and play therapy to express emotions.

Today your support is more vital than ever before because more local people need our help. But thanks to your generous response to our Full Circle Appeal, including a larger hospice at Pease Pottage, it's great to know we'll be able to provide even more care in the future. We share exciting news on our appeal and new hospice plans overleaf. And I hope reading these will make you feel as excited for the future of St Catherine's as I am.

Your support doesn't only provide care to people at our hospice. 8 out of 10 people we care for are looked after in their home. On p5, Emma shares how, thanks to you, her Mum Geraldine was able to die at home, surrounded by all the things she loved the most.

Without you we couldn't provide this kind of care. And we couldn't provide it without our volunteers either. More than 1,000 of them support us in 49 vital roles. And each of them has their own reason for doing so. On p9, Sara and Rita share theirs.

Each of you will have your own reason for supporting our hospice too, but it was particularly touching to read Marianne's (p11), reason for leaving us a gift in her will. Gifts like these will make sure that in the future nobody has to face death and loss alone.

I'd also like to thank you if you shared your views in our recent end of life care survey. Your honesty and insights will help to inform our future plans. And I look forward to sharing more on this in the future.

In the meantime, I'll hope you'll join us at some upcoming events, especially our new HeART to Heart trail (details on pages 6 and 7). These events help to raise vital funds and allow us to come into the heart of our community to meet many of you in person. This is always an honour, and I hope to meet more of you at events this summer.

My sincere thanks for supporting St Catherine's and local people in your community.

Giles Tomsett, Chief Executive

You've raised over £1 million towards our new hospice!

It's been over a year since we launched our Full Circle Appeal, so that nobody in our community has to face death and loss alone. This includes raising £5 million to build a larger hospice at Pease Pottage, so we can care for more people in the future.

At the moment we can only reach one in three local people who need our care. With your help we can change this. With your support, we want to make sure that, in years to come, everyone can have the best possible care when they're facing the end of their life. And that nobody is left to struggle alone.

Thanks to your generosity we're closer to this than ever before. Because in just one year you've already raised an incredible £1.25 million towards our new hospice.

More than 250 people have supported us including a group of supporters who each made significant donations to fund the first patient room on our new ward.

Long standing supporters, The Ernest Kleinwort Charitable Trust, contributed £200,000, and The Verity Waterlow Endowment, a small trust funding end of life care in the Horsted Keynes area, also gave us an incredibly generous grant of half a million pounds. Andrew Ronaldson, a Trustee of the Endowment said, "Verity Waterlow was fiercely independent but as she became more frail, like many of us, she needed more help. Her will rewarded those who helped her and was the foundation of her Endowment fund. We know that St Catherine's depends on donations and fundraising to do its work so the Trustees were delighted to give a grant for their new building. It was a natural choice for us."

Every donation, large or small, expresses the commitment of people in our local community to providing care for others. And supports our vision that everyone should face death



informed, supported and pain free. But all of this fundraising would not have been possible without two people whose generosity made our long held dream of a larger hospice possible. Bill Bridges, who generously donated us five acres of land, and John Shemeld who left us a legacy of almost £6 million in his will.

Passing the £1 million mark for our appeal is a huge achievement - one that wouldn't have happened without you.

But we're not quite there yet! We still need to raise more than £3 million. But we're confident that, together, we'll achieve this. So that in decades to come, our children, grandchildren, neighbours and friends will all have expert end of life care.

To find out more about our new hospice and how you can support please visit: www.stch.org.uk/newhospice



We can't forget the people who started everything off - the 7th Crawley Beavers!

The group were the first supporters of our new hospice appeal when they donated profits from a bake sale towards our new building. Yvonne Seetayah, Leader of the 7th Crawley Beaver Colony, said, "St Catherine's gives so much to people who are really, really desperate, so we wanted to give something back. Supporting the new hospice was a lovely way for us to do this."

Harry's Story...

I have a laugh here everyday

Thanks to your support, we're able to help people make the most of the time they have left. Harry Hicks shares how a stay on our wards helped to lift his spirits.



"In 2017 I was diagnosed with stomach cancer. When the hospital told me that it'd spread to my throat and was terminal, I was put in touch with St Catherine's.

As soon as I walked through the doors I felt relaxed

When I first heard the word hospice, I didn't know what to expect, but as soon as I walked through the doors here I felt relaxed. It couldn't be more different to how I imagined.

Coming here has really picked me up

Before I came to St Catherine's I wasn't enjoying life. I'd lost a lot of weight and my health was going downhill. Coming here has really picked me up though. The staff have helped me to gain weight and helped my family to understand what's going on with my illness too. I have a laugh everyday here and I couldn't have met better people.

One of my favourite things to do at home is gardening

When I first arrived at the hospice, Mandy, who works in the Therapies Team, asked what I enjoy doing. One

of my favourite things at home is taking care of my garden, and so during my stay here, I've been enjoying gardening with the Therapies Team. So far I've emptied troughs of old bulbs and planted them with geraniums, and I've replanted the daffodil and tulip bulbs in the hospice garden's flower beds. Next spring it'll look beautiful.

I'm returning home shortly but I'm coming back to Day Hospice so that I can continue gardening. The Therapies Team have also helped me show my son how to take care of my garden at home, to make sure that continues to look nice too.

Staying at St Catherine's has made me realise that I still have time to live

But when the end does come I wouldn't want to be anywhere else but the hospice. And I've got nothing but praise for the staff. They've really looked after me and helped me to make the best of what's to come. Without the hospice I wouldn't be here.

If I had to use one word for St Catherine's it would be brilliant! I love it here and I don't want to leave, but I know that the

hospice will still be here for me at the end of the phone, day or night, if I need them.

It's important that people, like you, continue to support and raise money for the hospice because St Catherine's should be able to be there for other people like me who need them. They really do deserve all the support they can get."

Your support allowed 350 local people to stay on our wards last year

Emma's Story...

Mum had her creature comforts

Emma tells us how, thanks to your support, her Mum Geraldine was able to be looked after in the comfort of her own home.

"Mum was a teacher. She was selfless and encouraging and always used to tell me and my sister that as long as we did our best it didn't matter about any outcome.

In August 2016 I noticed Mum's face was drooping a bit

I work as a physio so I decided to keep an eye on it. Mum and I were going to visit her family in Ireland but while we were there her face became worse. So when we arrived home, we took her straight from the airport to A&E.

Things moved quickly then. Mum was admitted to hospital and doctors discovered metastatic tumours on her brain. She was given steroids and initially seemed to respond well, but following another referral we discovered her condition was terminal. We were heartbroken.

At first, Mum's doctors gave her some time. But then they discovered her tumours were more aggressive than they'd first thought. Mum didn't have as much time as we'd first hoped.

Mum was adamant she wanted to stay at home

But as she became less well she found it harder to move around. I moved back home to help care for her and in a way I switched roles. I stopped being her daughter so much and switched to my healthcare role. It meant I was able to give her the care she needed. After all Mum had done for my sister and me it was nice to look after her.

St Catherine's seemed to fit seamlessly into our lives

Community nurses started visiting, equipment was delivered, and a hospital bed was set up in our lounge. Hospice nurses continued to let me care for Mum but I was grateful for their support.

As Mum became less well, her relatives and friends came to say goodbye. It was a really difficult time but we were all supported by St Catherine's. Their nurses were like angels. They instinctively knew what we needed and what mood to strike.

Having Mum at home meant we spent quality time together

One day Mum was more awake than usual. It was a warm day so our lounge windows were open, and Gabrielle, one of Mum's favourite singers, was playing on the stereo. My sister and I danced around Mum's bed singing and she sung along too. It's a memory that I'll treasure forever.

The evening before Mum passed away me, Dad and my sister were sat around her bed. Mum loved detective and house based TV programmes and we were watching a stream of them. She also ate a good dinner. It felt like she

was getting a last fix of all the things she'd loved the most throughout her life and saying a final farewell to them.

Later that night I had an instinctive feeling that something might happen so I stayed up late sitting next to Mum. In the early hours I climbed into her bed in the lounge and cuddled her. As I lay there holding Mum I knew it might be the last cuddle we had.

Thanks to St Catherine's Mum had her creature comforts alongside medical care

And I was able to have that last precious cuddle. I wouldn't have been able to lay with Mum like that anywhere else but home.

Losing Mum was horrible, but I've learnt to live my life fully because Mum can't live hers anymore. I like to think she's in the sunbeams looking down on me. And I'll continue to do my best to make her proud."



Your support allowed our doctors, nurses and therapists to make around 8,500 home visits to people across Sussex and Surrey last year



ST CATHERINE'S
HOSPICE

*Heart to
Heart*

HeART to Heart – Our community art trail

We're thrilled that our first ever community art trail, HeART to Heart, sponsored by Thakeham, has launched. And we hope you'll support us by following the trail and getting involved in our family friendly activities.

When you're out and about, make sure you keep an eye open for our giant hearts in community spaces and local venues all around you.

Fibreglass hearts and smaller wire hearts, designed by local young people, will be in place across Sussex and Surrey, in some of the areas where we provide end of life care.

Each heart has been individually designed by a talented, local artist and sponsored by a local business to raise vital funds towards our care. And our hearts have even gathered support from familiar faces, like Professor Brian Cox OBE and local author, Peter James.

On the trail you'll be able to get up close to multi-sensory hearts, each with their own inspirational story. And when you discover our very own St Catherine's Hospice heart, don't forget to drop in a donation to see what happens!

There'll be trail volunteers to meet and an app for your mobile where you can unlock exclusive rewards.

HeART to Heart will raise vital funds for our hospice so that more people in our community can receive the end of life care they deserve. And it will allow us to come into the hearts of your communities to raise awareness of the work we do.

Work that includes creative therapies such as gardening, like Harry spoke about on p4, and art.

Claire Lawson manages our Day Hospice and Therapies Team, and sees the difference art makes to some of the local people we care for.

She said, "Art is a crucial part of our care at St Catherine's. It can be very therapeutic for our patients and carers, and particularly children, to use art to express feelings that they can't always put into words. Or as escapism from their illness. Some of the art that people have created is incredible. Allowing people space to create something personal and

*Treat Yourself**Artist: Joanna Wenczka*

tangible to leave behind for their loved ones often brings them comfort. And we help them create art that's meaningful for them. From working with one gentleman to create a surprise memory box for his daughter's wedding, to helping another man make a gallery of pictures and a map of all the places he'd travelled in his lifetime, for his two young sons. It's really special to be able to offer these services."

Following the end of our 10 week art trail, there will be a farewell exhibition on Friday 25 and Saturday 26 October 2019 at the Copthorne Effingham Park Hotel. This will include Secret HeART, an art exhibition featuring a series of one-off, postcard artworks. There will also be an exclusive auction on Wednesday 30 October 2019, where each heart will be sold to raise further funds for our hospice.

Art isn't only important to patients. Many of our HeART to Heart artists, including 26 year old Joanna Wenczka from Horsham, have personal experiences of our hospice and have used these to draw inspiration for their designs. Here, Joanna tells us more. "My dad, Antony, and my Nanny were both cared for at St Catherine's. I've always been artistic and Dad really encouraged me with my artwork.

I've created a design that's reflective of the experience I and my family had with the hospice. My heart is called 'Treat Yourself' and is based on the concept that during both good and harder times people can often forget the important need to treat yourself. St Catherine's makes sure that people are able to treat themselves, through individual meals, homemade cakes, and a drinks trolley, even when they're approaching the end.

And they help people make treasured memories too. One of the most special memories during Dad's time at the hospice was when the nurses helped set up a streaming device so he could watch me graduate from university from his bed. Dad was really unwell by then but it made such a difference knowing he was watching me. And it meant a lot to him and my Mum too. Looking back I think he was holding on for that because he died the day after."

Jackie Chipps is another of our artists. She's also a nurse in our community team looking after people in the comfort of their own homes. Jackie has combined her experience of caring for local people with her love of art to create her heart, 'The Waterfall of Grief'.

Jackie explains, "Art's always been important to me and provides a creative outlet to my work at the hospice and the emotional toll that can take. At the hospice I give a lot of my time to others. Being part of HeART to Heart is giving me the chance to do something for myself whilst supporting the hospice.

For my heart design I'm using a style of art called encaustic art, which blends colours together by using hot waxes on a flat based iron. The design represents the real world theory - The Waterfall of Grief. Life is represented as a boat travelling down a river facing different experiences. Whenever the boat reaches a waterfall it's likened to loss or bereavement.

I'm hoping my design will remind people that although we all go through traumatic times in life we'll always come to calmer times again. It's something that ties into my work at St Catherine's because I'm there to support people through all of those

experiences. I'm there for the tough times, but for the better moments too.

Knowing some other artist's designs are based on their personal experiences of our care is very moving too. And I'm looking forward to seeing their hearts out on the trail. As a local charity it's great that we're bringing such a large scale project to the areas where we provide people in our community with care. It's fantastic to be a part of it."

For more information please visit: www.stch.org.uk/hearts, and follow [hearttrailuk](https://www.facebook.com/hearttrailuk) on social media. Or to register your interest in creating artwork for Secret HeART, or booking a place at our auction, please call 01293 583073.



Waterfall of Bereavement
Artist: Jackie Chipps

Anne's Story...

I'd never really known my life without him

At St Catherine's we know that emotional support is as important as physical care. Anne shares how your support allowed her and her family to benefit from tailored emotional care.

"My husband Dave was loved by everyone. He was a family man, and caretaker at a local school, but he still found time to volunteer as a first responder ambulance volunteer and a street pastor. I was immensely proud of all he did.

It was Christmas 2014 when Dave slipped at work and hurt his leg

When his pain persisted Dave went to hospital for some scans. And in March 2015, we were given the devastating news that he had stage four kidney cancer. Even then Dave didn't lose his positivity and joy. He had surgery but when he became unwell again we discovered his cancer had transferred from his kidney to his bones, lung and spine.

We concentrated on making the most of the time we had

Doctors couldn't tell us exactly how much time we had but we focused on making memories. And as Dave's illness progressed St Catherine's helped us prepare for his wish to die at home. As time went on pain overtook Dave, so it was decided it was best that he came to the hospice.

Arriving at St Catherine's felt like walking into an oasis

Where all I had to do was be with Dave. I didn't need to worry about caring for him like I had been at home. I could just treasure the time we had together. Everyone was so warm and caring and everything was taken care of.

We enjoyed the hospice's homemade cakes and wandering around the garden, and I regularly stayed with Dave overnight. Our vicar, Anita, gave Dave communion at the hospice too, which brought us both peace.

One night I asked Anita to stay overnight at the hospice. St Catherine's had never had a vicar stay before but they welcomed her with open arms. And we sat next to Dave talking, praying, and holding his hands.

As well as spiritual support I had counselling too

Dave and I were married 37 years. I'd known him since I was 14 so I'd never really known my life without him. I hadn't wanted to consider what I'd do after he was gone but my counsellor allowed me to think about life without Dave and how the end might be.

When Dave died, our daughter Hannah and I were there holding his hands

It was such a calm, peaceful ending. And the nurses were so respectful. The next morning we came back to the hospice as Hannah wanted to see her

Dad. Hannah's autistic, which means things are often very black and white for her, and she needed to know that her Dad wouldn't be left at the hospice. The nurses were brilliant, answering her questions and reassuring her.

Hannah really struggled to cope with her Dad's death

But St Catherine's Patient and Family Support Team were amazing and adapted their care to help her. Through play therapy, and game playing, Hannah was able to articulate in her own way how she was feeling. That was hugely helpful for her and me.

I don't know how my family would have coped without St Catherine's. Without them Dave's end of life would have been traumatic for us all. So when I hear that only one in three people are able to have the hospice's help it's devastating. Everyone deserves a peaceful ending like my wonderful Dave had."



We want to give something back

We're grateful that more than 1,000 volunteers donate their time to support our work. And we couldn't be here without them. People volunteer in 49 roles across our community including in our 15 shops across Sussex and Surrey. Here, Sara and Rita share more about why they volunteer in our shops.



Sara's Story

"When my Dad was diagnosed with terminal cancer he spent four weeks under St Catherine's care. During that time I saw the great support the hospice offers to patients and their families.

After I retired, I wanted to give something back to St Catherine's for the care and support they gave my Dad and our family. I live in Oxted and noticed that my local St Catherine's shop was looking for volunteers. I applied and I haven't looked back since!

I really enjoy volunteering in the Oxted shop

It's a fantastic way to meet people in my local community and the people I work alongside are lovely. There's always a variety of things to do, whether you're creative and would like to do a window display, or numerical and would like to work behind the till. There's something for everyone.

Our community are very generous

And we're lucky to receive some wonderful donations. I've been giving my own donations to the shop and so far I've raised £400. Any donation makes a difference.

If you're reading and are thinking of volunteering with St Catherine's I'd really recommend it."



Rita's Story

"I first came into contact with St Catherine's when my husband, Ken, was diagnosed with cancer and was struggling to control his pain.

When we first heard the word hospice it filled us with dread

But St Catherine's is such a happy place. Ken spent his last Christmas there and it was absolutely amazing. There were tables full of chocolates and sweets and our grandchildren were in seventh heaven!

Thanks to St Catherine's Ken was able to die at home

Having Ken at home was something we both wanted. And the hospice was incredible. They arranged everything so he could fulfil his wish, and I can never repay them. After I lost Ken I had counselling from the hospice's Patient and Family Support Team which helped me enormously.

I volunteer to give something back

I knew volunteering in the actual hospice would be too painful for me. So volunteering in my local hospice shop in Caterham two mornings a week is perfect. I love ironing so I usually steam the clothes that we've had donated. We have regular customers at the shop and I love chatting to them. We chat about all sorts, and whenever I have the opportunity I tell people how I feel about the hospice. Some people have been through the same experience I have so it's nice to chat as I know they understand.

Volunteering makes me feel useful, and the team have been really welcoming."

Last year volunteers donated over 50,000 hours of their time



Jean's Story...

Everything is made with love

The care you've been reading about is only possible thanks to people like you. And we're incredibly grateful for all the support you give us. Here, Jean shares why, like you, she's chosen to support our hospice.

I've been supporting the hospice for nearly 15 years

"Ever since my husband Alfred died under their care. I knew the hospice was a lovely place as I'd visited other people there and I'd always thought it was the right place for Alfred at the end. I was really happy he was at St Catherine's as I didn't want him to die at home. And his being there took a weight off my mind.

Alfred was only at the hospice for four days before he died

But during that time I was overwhelmed with the loving care he received. The hospice's care meant Alfred died with dignity.

After he'd gone I thought that perhaps I could do something to help other people as much as we'd been helped. I'd started making cards about 20 years ago as a hobby, and I thought it was a way I could raise some money for the hospice.

Now my card making gives me a reason to get up in the morning

Because I feel like I'm doing somebody else some good. Making cards makes me happy and I hope they make others happy too. It's lovely knowing someone else will benefit from the enjoyment I get from making them. I enjoy colouring the cards the most. I find colouring very therapeutic as I lose myself completely. And hours just fly away!

I make my cards in the morning and then spend my afternoons knitting woolly hats and cardigans for children in Romania.

I sell my cards in the communal lounge where I live

And I get personalised orders from people too. I always ask people what the person they're buying a card for is interested in so I can make something personal for them. And I've made cards themed around everything from gardening to golf.

Everything is made with love. I put my heart and soul into each card

Quite often people who've bought or received one of my cards will get in touch with me to say thank you. That's lovely and it's always nice to hear when people keep my cards instead of throwing them away.

Over the years I've raised more than £9,500

And I hope to reach £10,000 before I pop off! It's really important we support St Catherine's as they need people like you and I to help them. It's very sad to know that the hospice can only care for one in three people in our community because they do such a grand job. I want that to carry on."

Last year you raised more than £7.5 million for our hospice – Thank you!

Marianne's Story...

The nurses knew my Jim

With your support, we want to make sure that in years to come everyone in our community will have hospice care. Gifts in wills help to do this. Marianne tells us why she's decided to leave one of the greatest gifts possible – a gift in her will.

"My husband Jim had kidney disease for over a decade before he died. For a long time, he managed it with dialysis at home. But we always knew that one day that would change. It was 2015 when doctors decided to take him off dialysis and we had to prepare to say our goodbyes.

We came to St Catherine's right at the end of Jim's life

He was only at the hospice for 48 hours but even in that short time the nurses really got to know us. They gave us time, listened, and understood exactly what we needed. Jim dying was the worst possible thing. But St Catherine's was the best possible place for it to happen.

When Jim was in hospital staff used to call him William

It was strange for both of us, as although Jim was christened William, nobody ever called him that. At home, at work, with our family, he was Jim. I used to think, who's William? I'm married to Jim!

Nobody in hospital ever asked if Jim would like to be known as something different, but when we arrived at the hospice, we were asked straight away what Jim liked to be called. From then on he was Jim again. Being known by his nickname helped Jim to feel more at home, and to maintain his dignity and self-respect. It helped me too. Asking about a name sounds like such a small gesture. But it's little things like that which make the biggest difference.

Right at the end Jim became very unwell

And there were times when he was barely conscious. Yet, every time a nurse came into his room, they addressed him first. Some people

wouldn't have bothered. They might have thought it wouldn't make much difference at that stage. But not St Catherine's. They maintained a huge level of respect the whole time Jim was with them.

When Jim died, his daughter and I were sat by his side

He opened his eyes a final time and I knew that was his way of telling us he was ready to go, and he was alright. It made me feel very reassured and I'll never forget it.

St Catherine's support meant a huge amount to me and my family

That's why I'm including a gift to them in my will. Leaving the hospice a gift in your will might feel like a big decision but for me it was an easy one. It's my way of saying thank you for the care Jim had, and for the kindness the hospice showed our family.

Leaving a gift also reassures me that St Catherine's will be around to look after other people in decades to come. But they can only do that with our support.

Everyone deserves dignified end of life care like my Jim had. This is my way of helping make sure more people get that."

If you feel inspired to leave a gift in your will, please contact **Andy Perry, Legacy Officer on 01293 447369 or email andyperry@stch.org.uk**

Gifts in wills
fund the care
of one in four
patients



Together we can do it

Your generosity has allowed us to help the people you've been reading about. Here are some things you can do to help us reach more people.

Live at the Lake

Enjoy two days of family friendly festival vibes at Live at the Lake! Taking place on Friday 6 September (5pm – 10pm) and Saturday 7 September 2019 (12pm – 8pm) at Tilgate Park, Live at the Lake will showcase some of the UK's best tribute bands. With amazing street food, multiple bars, and lots to keep the family entertained, why not spend your weekend with St Catherine's? Wham! are headlining Friday evening while ABBA will finish a whole day's entertainment on Saturday. Day, weekend and family tickets are available. Book your tickets online: www.stch.org.uk/lake or call the team on the number below.

Dragon Boat Festival

Taking place on Sunday 8 September 2019 at Tilgate Park, our annual Dragon Boat Festival promises an action packed, free day of family fun. Come and join us lakeside to cheer on local businesses as they race head to head across Tilgate Lake in 40ft Dragon Boats. Who will be 2019's Dragon Boats champion?

Sussex Landmarks Hike

Join us for a family friendly nature trail (approximately 3 miles), 6 or 9 mile routes, or a full 13 mile hike through picturesque Sussex countryside to raise funds on Sunday 13 October 2019. Advance registration is £8 for adults (£10 on the day) and £5 for children. Register online: www.stch.org.uk/slh or call the team on the number below.

Volunteer with us

Could you give a little of your time to help someone whose time is limited? Join more than 1,000 people in your community who already give their time and skills to enhance our expert care.

Leave a gift in your will

Did you know the care we give to one in four local people is funded thanks to gifts people leave us in their wills? It really is the greatest gift you can give.

Remembering St Catherine's in your will is a simple way for you to provide care to future generations. It costs nothing today to make sure there's care tomorrow and that no-one dies alone, ever again. We depend on local supporters, like you, remembering St Catherine's in their will, to give expert care to people who need it most. Thank you.



You can donate today

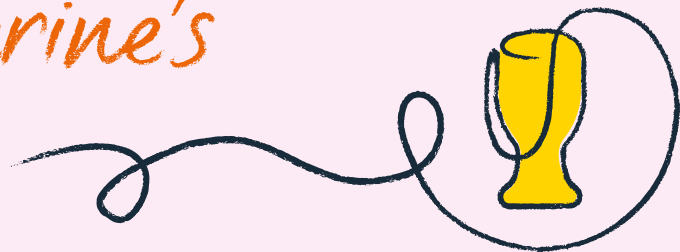
A regular donation of £20 could provide tailored nursing care on our wards to more people like Harry (p4)

Your gift of £50 could pay for a play therapy session for more people like Hannah (p8) to help them come to terms with the death of a parent

Your gift of £100 could help more people like Geraldine and her family (p5) receive care from our community nursing team in the comfort and familiarity of their own home.

To find out more about helping St Catherine's please contact the Fundraising Team on: 01293 447361 or visit: www.stch.org.uk/support-us

Support St Catherine's



If you would like to send a donation to help us continue to provide our very special care please complete this form:

YOUR DETAILS:

Title:First Name:Surname:

Address:

Postcode:

Tel No:

Email:

I would like to give

£

Thank you

giftaid it

If you are a UK taxpayer, sign and date below and we'll receive an extra 25p for every £1 you donate – at no cost to you.
I want to Gift Aid my donation and any donations I make in the future or have made in the past four years to St Catherine's Hospice. I confirm that I am a UK taxpayer and understand that if I pay less Income Tax and / or Capital Gains Tax than the amount of Gift Aid claimed on all my donations in that tax year it is my responsibility to pay any difference.

Today's date:Signature:

How we keep your data and stay in touch:

St Catherine's Hospice will keep your details safe and secure. We will not sell or share your information. We'd love to keep you updated about our work and how you are making a difference to the people we support. We would also like to send you information about our fundraising and events and other ways in which you can help us.

- ☐ Yes, I am happy to receive occasional phone calls
- ☐ Yes, I am happy to receive occasional text messages
- ☐ Yes, I am happy to receive occasional emails

More information on how we use your data can be found in our privacy statement, which is on our website at www.stch.org.uk/privacy-statement/. By returning this form, I confirm I am aware of the privacy policy and accept how St Catherine's will handle my information. For further details or a copy of our statement, or if you would like to change your preferences on how we contact you, please call one of our Supporter Services team on 01293 447360.

PAYMENT OPTIONS:

Please find enclosed a cheque made payable to St Catherine's Hospice **OR** please debit my: Mastercard ☐ Visa ☐

Card No: [][][][] - [][][][] - [][][][] - [][][][]

Expiry Date: [][] - [][] Security No (last 3 digits on reverse of card): [][][] Issue No: [][]

Signature:Date:

- ☐ Please tick here if you would like to stop receiving communications. This means you won't hear about any of our work.
- ☐ Please send me information about leaving a gift in my Will, so no one in West Sussex and East Surrey will face death and loss alone, ever again.

Please return your completed form and donation in the enclosed envelope or to:
St Catherine's Hospice, Malthouse Road, Crawley, West Sussex, RH10 6BH

Play your part in our care

1

2

5

7

3

Each week you could win one of the following:

1 x £1,000 | 1 x £300 | 1 x £100 | 16 x £25 prizes

Join us today and send the form below in the enclosed envelope.

YOUR DETAILS:

Title:

First Name:

Surname:

Address:

Postcode:

Tel No:

Email:

Date of Birth*:

* You must be over 16 to play.

Your Lottery Membership - please select one option below:

One chance a week:

☐ £4.34 a month (Direct Debit only)

☐ £13 every 13 weeks

☐ £26 every 6 months

☐ £52 every year

Two chances a week:

☐ £8.68 a month (Direct Debit only)

☐ £26 every 13 weeks

☐ £52 every 6 months

☐ £104 every year

I confirm I am over 16 years of age.

Today's date:

Signature:

PAYMENT BY DIRECT DEBIT:



To the Manager:

Bank/Building Society

Address:

Postcode:

Name(s) of Account Holder(s)

Sort code: - - Account No:

Collection Date: 1st 15th

Instruction to your bank/ building society to pay by Direct Debit. Originator ID number: 430619. Please pay St Catherine's Hospice Direct Debits from the accounts detailed in this instruction, subject to the safeguards assured by the Direct Debit Guarantee. I understand that this instruction may remain with St Catherine's Hospice and, if so, details will be passed electronically to my bank/building society.

Signature:

Date:

OTHER PAYMENT OPTIONS:

By cheque: Made payable to St Catherine's Hospice Lottery (minimum payment £13)

Payment value: £ for chances a week

By card: Please call us with your details on: 01293 447373.

By returning this form, I confirm I have read the 'How we keep your data and stay in touch' statement on the reverse of this form.