



*Your part in a new future
for St Catherine's*



**Triple cancer survivor
Patrick McIntosh, pictured
with Dame Judi Dench,
cycled more than 7,000
miles, from Malthouse Road
to Tokyo, to raise funds for
our new hospice**

We're building a brand new hospice at Pease Pottage so that we can reach more people with our expert care and support. To do this, we need the help of people like you in our community.

**To get involved visit: www.stch.org.uk/newhospice, call us on 01293 447362
or email: newbuild@stch.org.uk**

Currently we can only reach one in three people who could benefit from our care

We can no longer expand facilities at our current hospice in Crawley, so we're building a new home less than two miles away. This will allow us to increase the number of ward beds we can offer from 18 to 24, and to expand our community nursing, therapies and counselling teams so that we can reach many more people.



Our new hospice will cost £17 million. Since launching our appeal in May 2018 to raise the final £5 million, we have raised an amazing £1.9 million! Opposite you can read just a few ways our fantastic supporters have been fundraising for us.

Helping more people at our new hospice

Val Smith is a Nursing Assistant on our wards. She started working here six months after St Catherine's first opened its doors 35 years ago. Val tells us more.



"I remember the opening of the hospice being a time of great excitement mixed with slight trepidation. A hospice was something brand new for our community. And it was a new challenge for me personally too.

St Catherine's was founded by local people who felt that terminally ill people in their community weren't getting the expert care they needed, and deserved, when they were dying. Instead of ignoring the problem the group took action. They raised money and built the area's first hospice to make sure that people would get better care in the future.

We now need to stand on our founders' shoulders and show the same courage they did as we fundraise for a bigger hospice at Pease Pottage.

A bigger hospice is vital. Today more people than ever before are being referred to us but we can't help them all. That's something I find very upsetting. I became a Nursing Assistant to help people, not to leave them without support.

With our new hospice it's reassuring to know that in future fewer people will have to manage alone. Our new home will allow people dignity and

privacy, more green space and the chance to spend their last days in comfort in a place they can personalise to feel like home.

St Catherine's is so much more than a building. It's a way of caring, and the support you give is very much a part of that. I hope you'll continue to support us as we look forward to an exciting future. Without you there would be no St Catherine's."

Our amazing supporters

Long-time supporter Patrick McIntosh cycled more than 7,000 miles over 139 days to raise money for our new hospice. His neighbour Dame Judi Dench supported him all the way. *“Patrick cycled for our local hospice, St Catherine’s. I’m sure most people know about the phenomenal work they do looking after people in our community.”*



The 7th Crawley Beavers were our very first new hospice supporters, raising an amazing £200 through a bake sale! Colony Leader Yvonne Seetayah said, *“Supporting the new hospice was a lovely way for us to give something back to St Catherine’s, who give so much to help people at such a difficult time.”*

Luke and Steph Guidera organised two Family Fun Days at The Black Swan Pub in Pease Pottage, raising more than £2,600 for our Capital Appeal. *“When we heard that St Catherine’s were building their new hospice nearby, and that they needed funds to do this, we knew we had to do something to help,”* said Steph.

Next month, 58 intrepid trekkers will head off to the largest hot desert in the world, the Sahara to help raise money towards our new hospice.

Our challengers will spend three days trekking across the Moroccan desert, through ancient dried up river beds, over mighty sand dunes and sun baked plains. They will experience the authentic Berber lifestyle, accompanied by a herd of camels and sleep under the stars.

Residents at Durrants Village in Faygate have been supporting our Capital Appeal by organising coffee mornings and craft fairs, amongst other activities. So far, they’ve raised over £2,200. This total has been matched by Legal & General, their landlords, and Inspired Villages, their Managing Agents, bringing their grand fundraising total to more than £6,600!

Many of the trekkers have already exceeded their sponsorship target of £2,020 including Trudi Keary. Trudi said, *“Having met people personally affected by the hospice I’ve seen what an important part of the local community St Catherine’s is. It needs support to carry on its fantastic work - that’s why I signed up to the Sahara Trek.”*

“The new hospice means St Catherine’s can reach many more people with their care. We want to do all we can to help them,” said a member of the Residents’ Association.



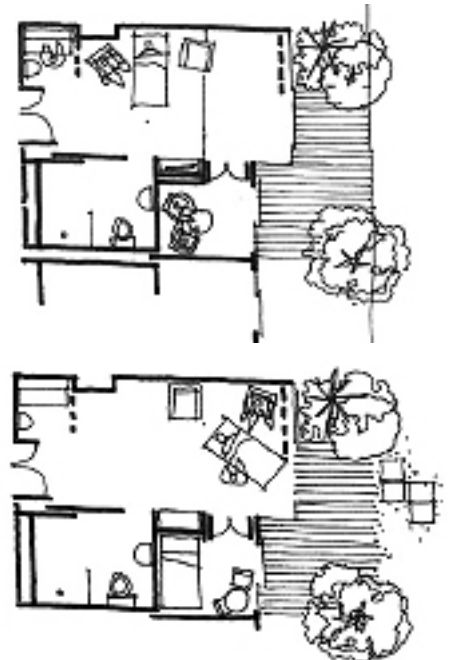
Enhanced comfort and privacy thanks to our community

In May 2018 we asked people across Sussex and Surrey to donate funds towards the building of the first patient suite in our new hospice.

Thanks to our community’s generosity, we exceeded our target and raised more than £150,000!

In our new hospice, we’ll have individual patient suites each with an ensuite toilet, shower room and a small family

area where a relative can stay close by overnight. This will be a big improvement on our current ward, which has 18 beds in a mix of single rooms, two-bed and four bed bays, and one room for relatives to stay comfortably overnight. Thanks to our supporters, future patients and families will benefit from enhanced privacy and personal family areas in our new hospice.



Our plans are well advanced and we'll start construction in spring this year

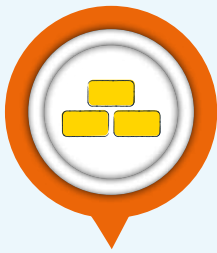


Our new hospice will be built on five acres of land, donated by local landowner Bill Bridges.

The extra space – we currently have less than two acres – means that we can create a beautiful, natural environment for people. Left, you can see our landscaping masterplan, with secluded patios for every patient suite, extensive use of trees and green spaces, and an elevated pavilion to the south east overlooking the High Weald Area of Outstanding Natural Beauty.

Important dates

We need your help to make our new hospice plans a reality. Together we can make sure more people in our community – more of our family, friends and neighbours have hospice care when it's needed most, and that nobody has to face death and loss alone ever again.



SPRING 2020

Construction of our new hospice begins



SPRING 2021

The main structure is finished and our kitout and equipment installation begins



WINTER 2021


Construction complete and hospice handed over to us




SPRING 2022

Our new hospice opens at Pease Pottage! We'll be able to support more local people with loving care when it's needed most

ST CATHERINE'S HOSPICE

 St Catherine's Hospice Crawley

 @StCHospice

 @stcatherinescrawley

Registered charity number 281362
and as a Company in England no. 1525404.

If you want to help support our new hospice we'd love to hear from you!

Please get in touch with Nick Bell and Alice Pinkard by emailing: newbuild@stch.org.uk, calling 01293 447362, or visiting our website: www.stch.org.uk/newhospice